

Intro

Course aims and  
benefits

Who benefits from  
training?

Training highlights  
overview

Training method and  
requirements

Contact

# Setup and Configuration of EPLAN Platform 2025

One Day, All the Details

Let us help you switch to the  
new EPLAN Platform 2025





Intro

Course aims and  
benefits

Who benefits from  
training?

Training highlights  
overview

Training method and  
Requirements

Contact

# One Day, All the Details: Setup and Configuration of the EPLAN Platform 2025

The EPLAN 2025 offers a modern, technical foundation for a completely new user experience.

In our one-day update training, we will get you up to speed on the most important new features and offer useful tips for implementation.



Intro

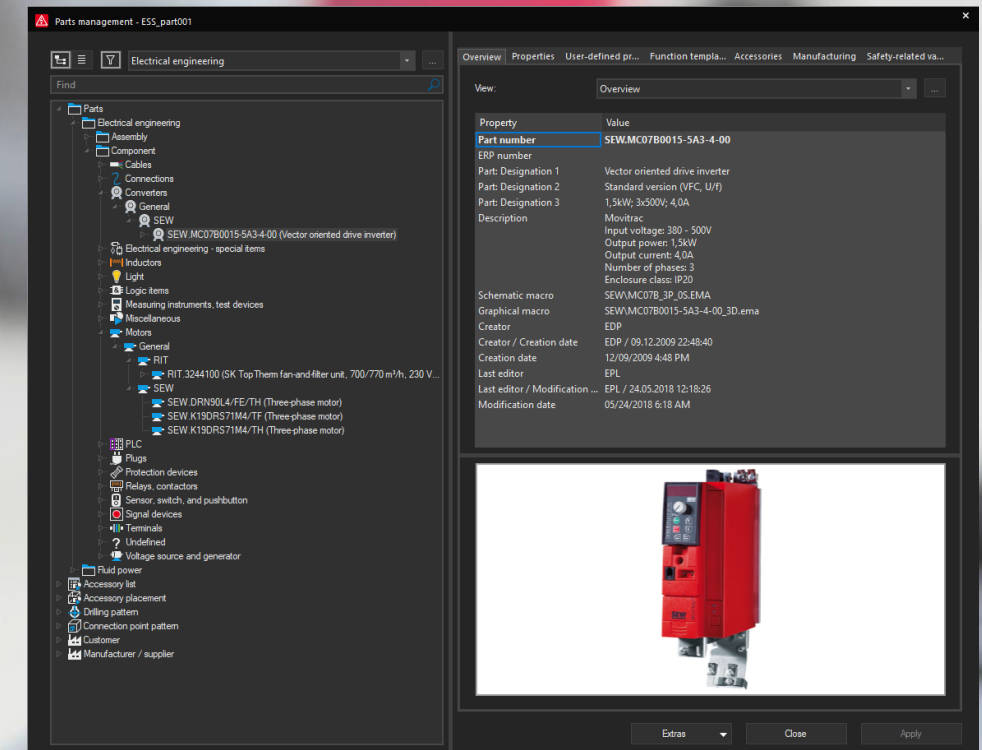
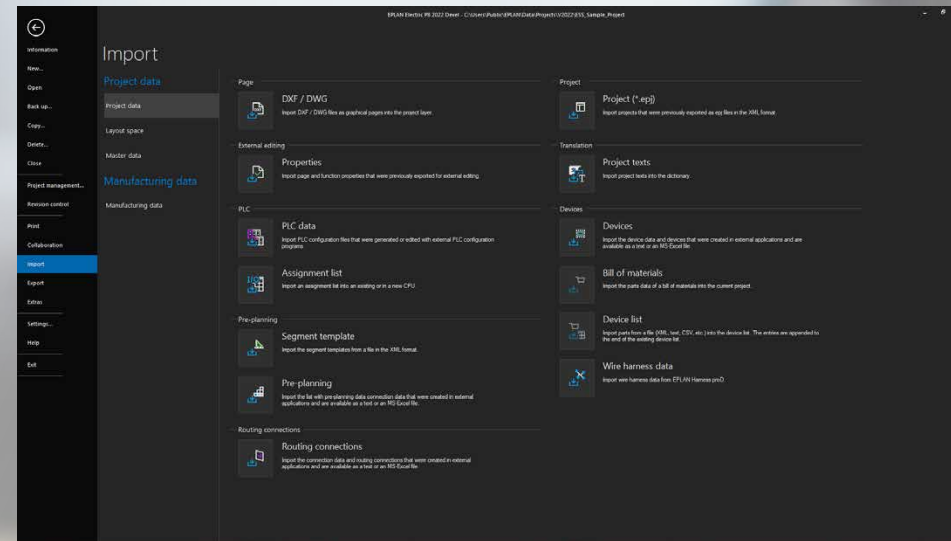
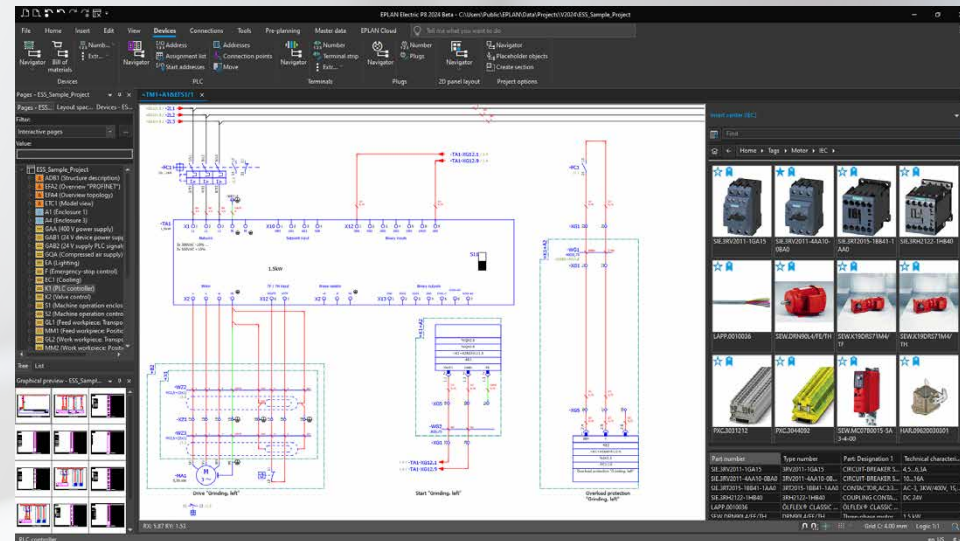
Course aims and  
benefits

Who benefits from  
training?

Training highlights  
overview

Training method and  
Requirements

Contact



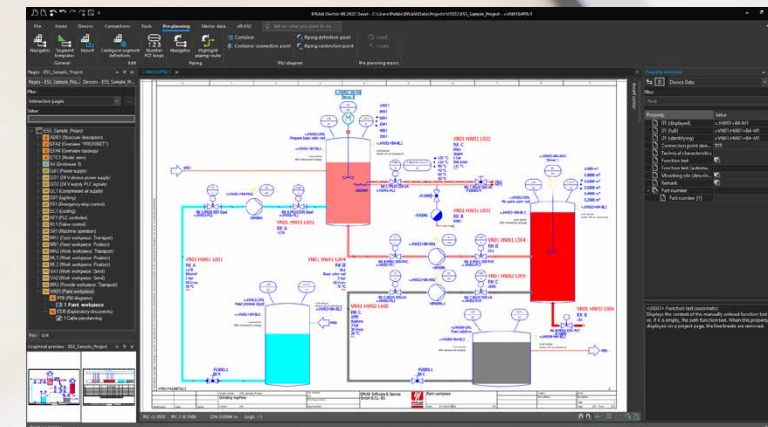
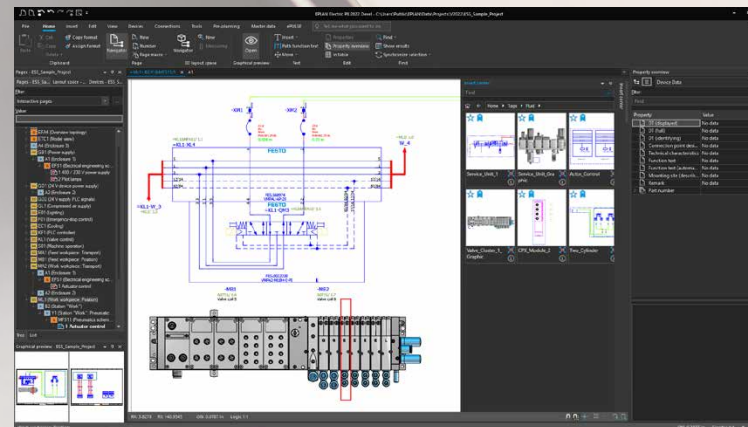
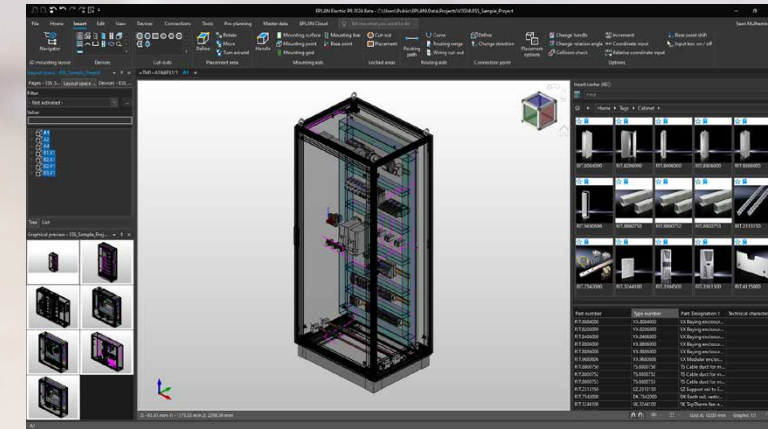
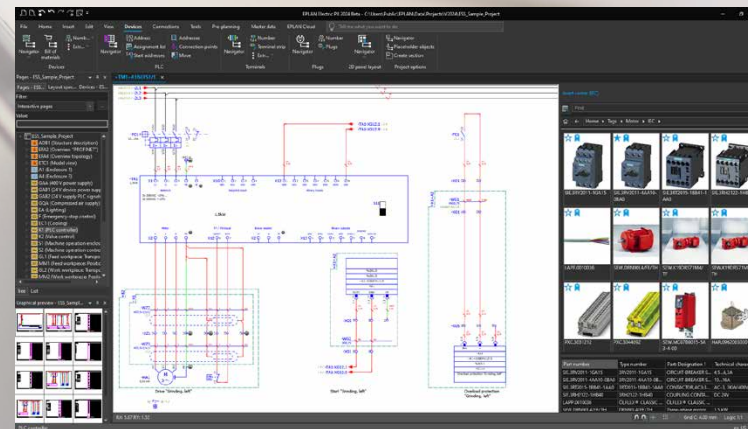
# Course aims and benefits

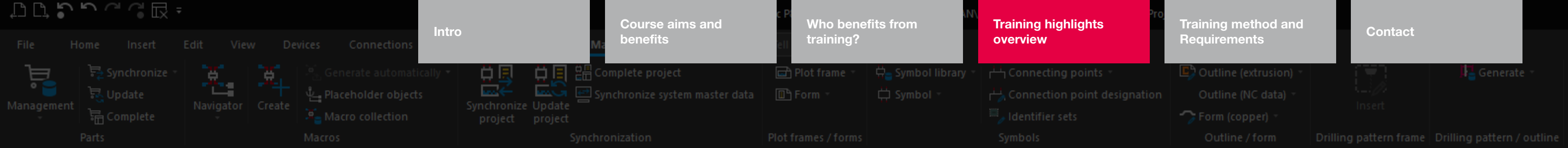
- Install and configure the new EPLAN Platform 2025 live during your training session.
- Learn the latest developments through practical examples.
- Benefit from our illustrated, digital training documentation.
- Learn to use the integrated authorisations management system.
- With our best practice instructions, you will be able to make the transition from the project template to the basic project quickly and simply.



# Who benefits from training?

- The training is tailored to the needs of EPLAN key users, administrators and personnel responsible for integrating the EPLAN Platform into the company's system landscape, who have been using Version 2.9 or older.





# Overview of training highlights

## ■ Platform setup and configuration

- Initial installation of the new EPLAN Platform 2025
- Simultaneous operation of the EPLAN Platform 2025 and previous Versions 2.9 or older
- Managing the rights of various user groups in EPLAN

## ■ Identity client

- Administration of organisation in the EPLAN Cloud
- Central registration for EPLAN Cloud products

## ■ New internal format for databases

- Migration of existing access databases to the EPLAN Platform
- Connection of existing SQL databases

## ■ Conversion of project templates to basic projects

- Conversion of project templates from previous platform versions to basic projects



## Training method

Participate in our one-day training online. We will provide a complete training environment. **No EPLAN installation or licence necessary!**

## Want to contact us directly?

Our team would be happy to assist you.

Phone: +44(0) 1709 704 000

E-mail: [info@eplan.co.uk](mailto:info@eplan.co.uk)

Available as online training

All information, event locations and dates:  
[www.eplan.co.uk/services/training](http://www.eplan.co.uk/services/training)



**EPLAN UK**

Hellaby, Bramley, Rotherham, S66 8QY  
Phone: +44(0) 1709 704 000  
E-mail: [info@eplan.co.uk](mailto:info@eplan.co.uk)  
[www.eplan.co.uk](http://www.eplan.co.uk)

PROCESS CONSULTING

ENGINEERING SOFTWARE

IMPLEMENTATION

GLOBAL SUPPORT

FRIEDHELM LOH GROUP

