

Intro

Course aims and  
benefits

Who benefits from  
changeover training?

Training highlights  
overview

Training method and  
requirements

Contact

# Changeover Training EPLAN Platform 2024

Two Days Full of Tips and Tricks

We will help you transition to the  
new generation of the EPLAN  
Platform.







Intro

Course aims and  
benefits

Who benefits from  
changeover training?

Training highlights  
overview

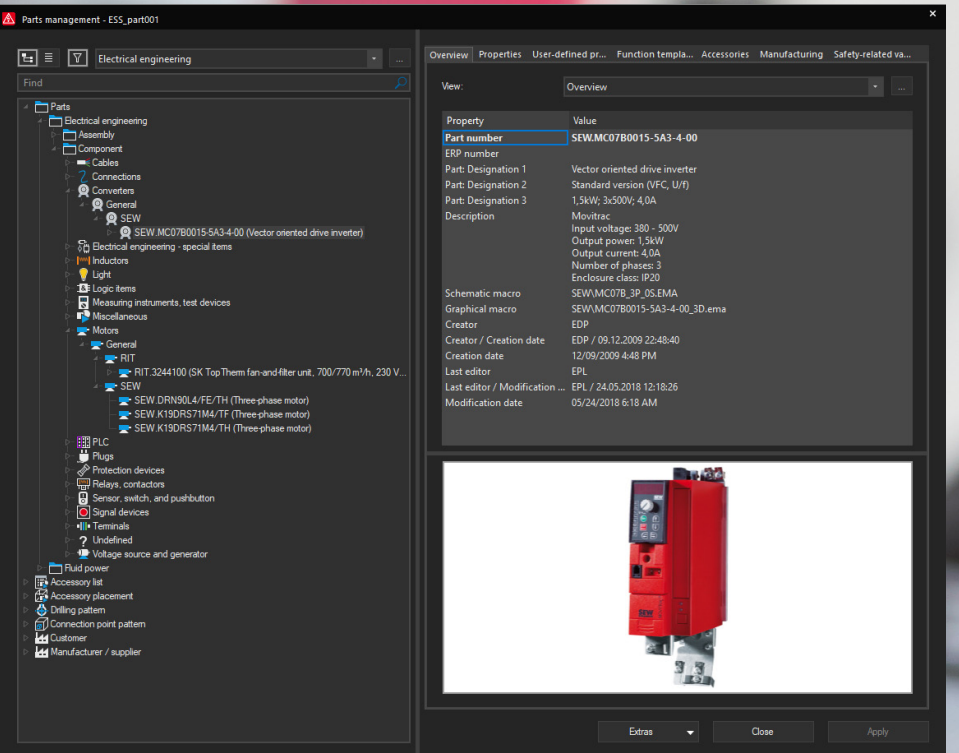
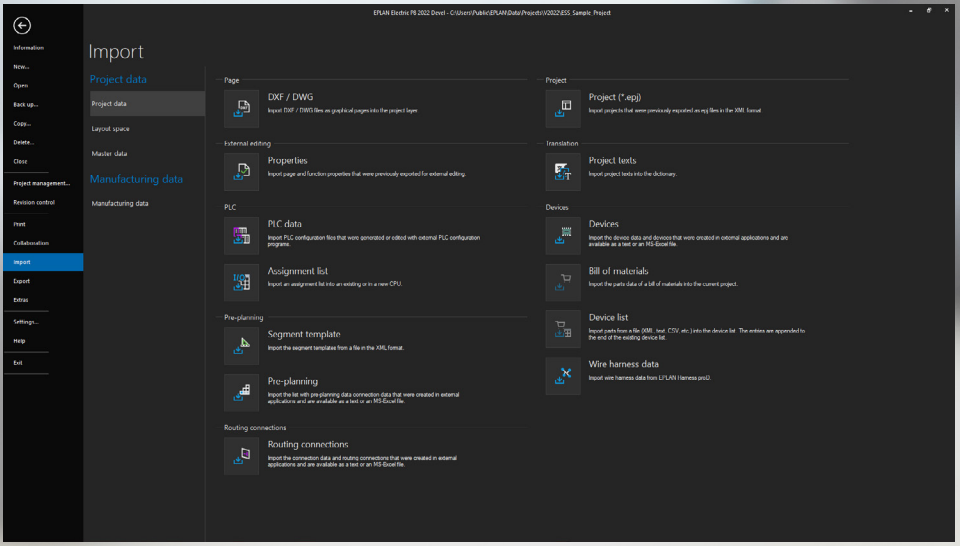
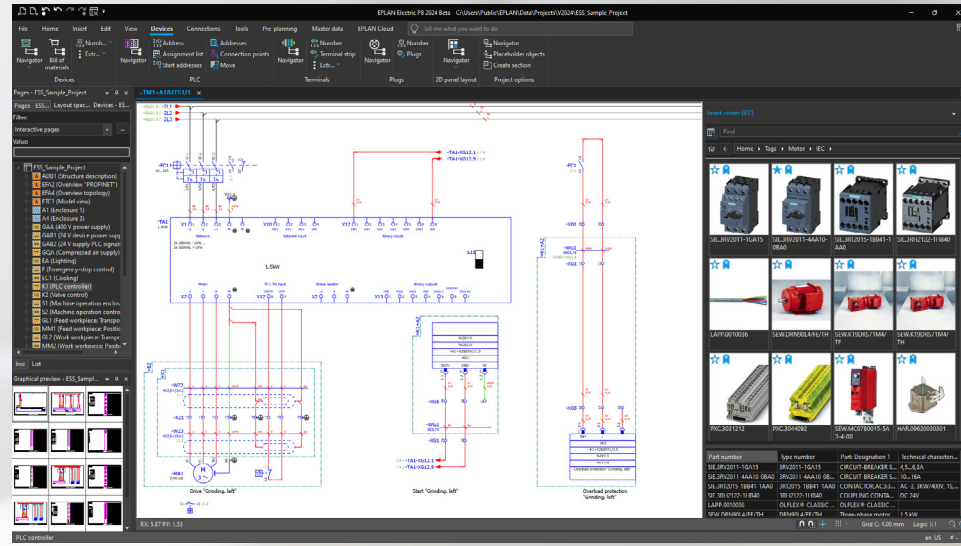
Training method and  
requirements

Contact

# Changeover Training EPLAN Platform 2024

The EPLAN Platform 2024 offers a modern, technical foundation for a completely new user experience. In our two-day training, we will get you up to speed on the most important new features and offer you useful tips and tricks for your daily work in engineering.





# Course aims and benefits

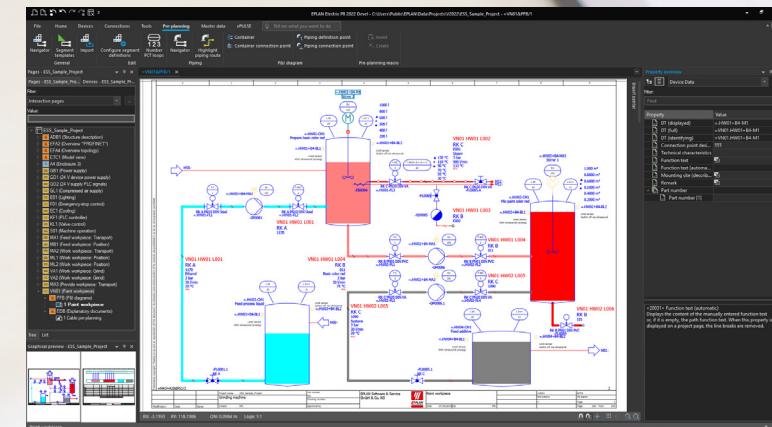
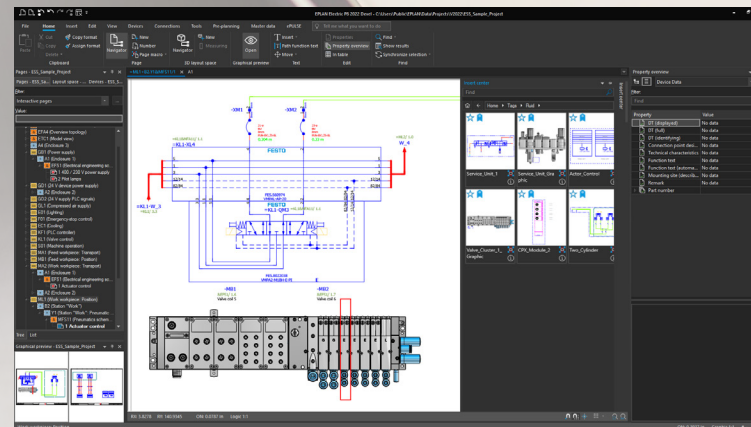
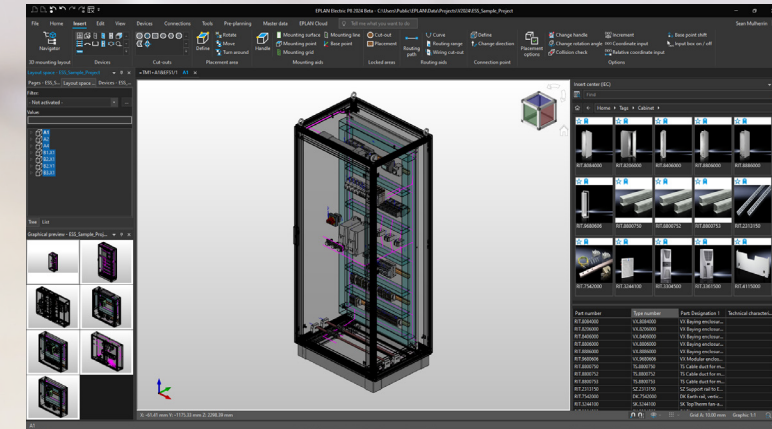
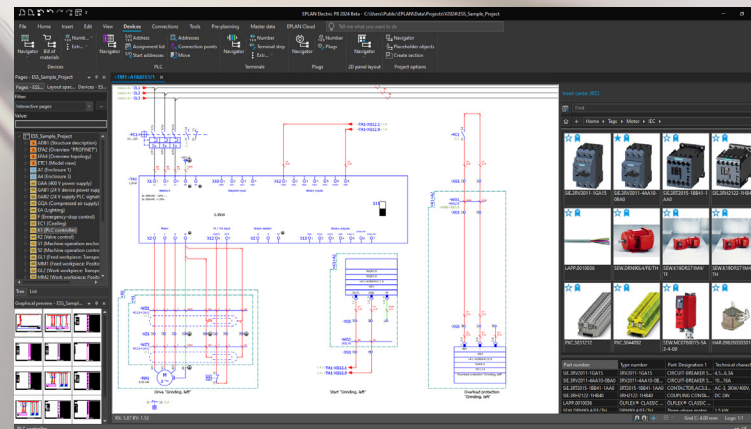
- Get to know the EPLAN Platform 2024 with its new, more ergonomic user interface and modern operating concept.
- Experience the advantages of the new cloud and platform solutions.
- Benefit from valuable tips and tricks for engineering with EPLAN from our experienced trainers.

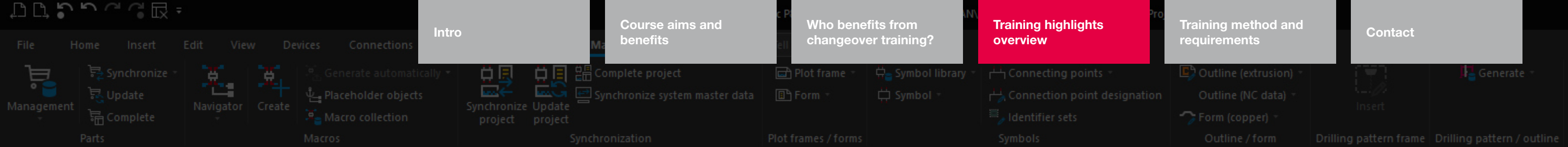




# Who benefits from changeover training?

- This two-day transition training is tailored to the needs of users of the EPLAN Platform Version 2.9 (or older) who would like to successfully transition to EPLAN Platform 2024.





# Overview of training highlights

## ■ New user experience in the EPLAN Platform 2024

- Getting started with the new EPLAN Platform is even easier and more efficient
- New workflow for opening and restoring projects
- Effective use of the menu ribbon and toolbar for quick access in EPLAN
- Each user can customise and optimise the user interface
- Central access to all import and export functions

## ■ Insert center

- Quickly find symbols, macros and devices via the object filter
- Create and use tags and favourites in the engineering workflow

## ■ Database Format

- New internal database format for devices, dictionary and project management

## ■ Device Management

- More clarity via the reduction of tabs, customising the appearance
- Find data more quickly in a more targeted way with a newly combinable search functions and schematics technology
- More flexible device creation: customisation with the new variant management
- Save schematics macros with different norms and/or company standards

## ■ EPLAN Cloud and Platform Solutions

- Share and manage projects in the EPLAN Cloud with eMANAGE
- Implement, comment on, and version project changes via browser with EPLAN eVIEW
- Allocate devices on a user-specific basis and use them as data sources via EPLAN eSTOCK

## ■ PLC, Cables, Terminals and Calculating Block Properties

- PLC I/O connections in a channel-oriented manner and presented in tabular form
- More efficient editing of cables that are separately represented
- Place shielding from navigators
- Automatic placement of spare wires on terminals
- Optimised dialogue for editing terminals: check terminals, accessories, new functions and devices
- Use block properties for calculation



## Training method

Take part in our two-day training in our online classrooms. We will provide a complete training environment. **No EPLAN installation or licence necessary!**

## Want to contact us directly?

Our team would be happy to assist you.

Phone: +44(0) 1709 704 000

E-mail: [info@eplan.co.uk](mailto:info@eplan.co.uk)



Available as online training

All information and dates:  
[www.eplan.co.uk/services/training](http://www.eplan.co.uk/services/training)



Intro

Course aims and  
benefits

Who benefits from  
changeover training?

Training highlights  
overview

Training method and  
requirements

Contact

### EPLAN UK

Hellaby, Bramley, Rotherham, S66 8QY  
Phone: +44(0) 1709 704 000  
E-mail: [info@eplan.co.uk](mailto:info@eplan.co.uk)  
[www.eplan.co.uk](http://www.eplan.co.uk)

PROCESS CONSULTING

ENGINEERING SOFTWARE

IMPLEMENTATION

GLOBAL SUPPORT

FRIEDHELM LOH GROUP

